



# GUNLEATHER

2020 PRODUCT CATALOG

# HANDCRAFTED ONE AT A TIME



# 1791 GUNLEATHER

On December 15, 1791, the new United States of America ratified the Bill of Rights, the first ten amendments to the US Constitution. Including the Second Amendment, promising individuals the right to bear arms. We chose to include the year 1791 in our name to signify our deep respect for those rights.

**Our love and appreciation of the Second Amendment** goes hand-in-hand with our passion for the art of gunleather and our reverence for the original patriots of this great nation.

To us, the right to keep and bear arms is a patriotic responsibility to ensure that our country, our cherished freedoms, and our families are protected. Given this awesome responsibility, we take pride in supplying our fellow citizens with superior, handcrafted holsters and belts that protect their firearms until the moment they are needed.

Four generations of professional leather artisans use only premium, 100% American Certified, Heavy Native Steerhide to handcraft our timeless, versatile, high-quality products.

## ICON KEY

### HOLSTER KEY



**RH** RIGHT HANDED



**LH** LEFT HANDED



**A** AMBIDEXTROUS



**IWB** INSIDE THE WAISTBAND



**OWB** OUTSIDE THE WAISTBAND



**OR** OPTIC READY



**PH** PADDLE HOLSTER

### COLOR KEY



SIGNATURE BROWN  
**SBR**



CLASSIC BROWN  
**CBR**



STEALTH BLACK  
**SBL**



BLACK  
**BLK**



BROWN ON BLACK  
**BLB**



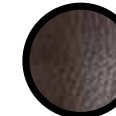
NIGHT SKY BLACK  
**NSB**



VINTAGE SIGNATURE BROWN  
**VTG**



VINTAGE CLASSIC BROWN  
**CVTG**



BROWN  
**BRW**

# ULTRA CUSTOM

## Multi Fit Holster

NEW  
FOR  
2020



**1791 Ultra Custom holsters** are the most custom leather holsters ever created! With our patent pending technology, the Ultra Custom allows you to mold and re-mold your holster for ultimate customization. Made with ultra-soft cow hide and reinforced synthetic tuckable clip for IWB carry, it provides superior concealability and comfort.

Available in 6 sizes that accommodate everything from revolvers to micro and full frame firearms.

Sizes listed also include similar frames.



UCH-3



UCH-3

### SIZE 0

Beretta Tomcat 32, Pico 380 / Colt 903 Pocket, Mustang Lite / Kahr CW380 / Kimber Micro 380, Micro 9 / Sig Sauer P238, P938

### SIZE 1

CZ 2075 RAMI / Keltec 380 / Walther PPK / Ruger LCP, EC9S / Kahr CM/PM40, CM/PM9 / S&W M&P Bodyguard

### SIZE 2

Revolvers J-Frame / Rossi Small Frame Revolvers / Ruger LCR / S&W 38 Special, LCR, 638, 642, Bodyguard / Taurus 85, 856 / Colt Cobra

### SIZE 3

1911 3" / Bersa Thunder 380 / Glock 42, 43, 43X / Kimber Carry Ultra / Ruger LC9, SR22 / Sig Sauer P365, P230 / Walther P22

### SIZE 4

CZ 75 / Glock 17, 19, 19x, 22, 23, 25, 26, 27, 29, 30, 31, 32, 33 / S&W MP40, MP9, Shield / Sig Sauer P225, P226, P228, P229, P239 / Springfield XD9, XD40, XDS, XDE / Ruger SR9, SR9c, SR40 / Taurus G2, PT111, PT24/7, 709 Slim

### SIZE 5

H&K 45c, P2000USPc, VP9sk / Ruger American, P90, P95, Security-9 / Sig Sauer M11A1, P229c, P229 Legion, P320, P320c / Springfield XDMc

### AVAILABLE SKUS

UCH-0-NSB-R  
UCH-1-NSB-R  
UCH-2-NSB-R  
UCH-3-NSB-R  
UCH-4-NSB-R  
UCH-5-NSB-R

### SIZE 0

Beretta Tomcat 32, Pico 380 / Colt 903 Pocket, Mustang Lite / Kahr CW380 / Kimber Micro 380, Micro 9 / Sig Sauer P238, P938

### SIZE 1

CZ 2075 RAMI / Keltec 380 / Walther PPK / Ruger LCP, EC9S / Kahr CM / PM40, CM/PM9 / S&W M&P Bodyguard

### SIZE 2

Revolvers J-Frame / Rossi Small Frame Revolvers / Ruger LCR / S&W 38 Special, LCR, 638, 642, Bodyguard / Taurus 85, 856 / Colt Cobra

### SIZE 3

1911 3" / Bersa Thunder 380 / Glock 42, 43, 43X / Kimber Carry Ultra / Ruger LC9, SR22 / Sig Sauer P365, P230 / Walther P22

### SIZE 4

CZ 75 / Glock 17, 19, 19x, 22, 23, 25, 26, 27, 29, 30, 31, 32, 33 / S&W MP40, MP9, Shield / Sig Sauer P225, P226, P228, P229, P239 / Springfield XD9, XD40, XDS, XDE / Ruger SR9, SR9c, SR40 / Taurus G2, PT111, PT24/7, 709 Slim

### SIZE 5

H&K 45c, P2000USPc, VP9sk / Ruger American, P90, P95, Security-9 / Sig Sauer M11A1, P229c, P229 Legion, P320, P320c / Springfield XDMc

### AVAILABLE SKUS

FCD-0-BRW-R  
FCD-1-BRW-R  
FCD-2-BRW-R  
FCD-3-BRW-R  
FCD-4-BRW-R  
FCD-5-BRW-R



FCD-3



FCD-5

## FAIR CHASE

## Handcrafted From American Whitetail Deer Skin

**NEW  
FOR  
2020**



**1791 Fair Chase holsters** are made using wild and ethically hunted fair chase Whitetail deer skin. Together with our meticulous handcrafting and superior design, the Fair Chase holster delivers our most comfortable and concealable holster ever.

Deer skin's combination of resistance and flexibility is unmatched by any other type of leather, making it the finest of all wild animal leather.

Designed to accommodate a wide range of firearms from revolvers to full frame firearms. Sizes listed also include similar frames.



HANDCRAFTED ONE AT A TIME

# SNAGMAG™

## Concealed Magazine Holster

**NEW  
FOR  
2020**



### There's no such thing as Extra Ammo™

As firearms get smaller and smaller to increase concealability, the first thing they sacrifice for that concealability is capacity.

SNAGMAG™ addresses this issue by creating an easy way to carry additional ammunition right in your pocket. The most obvious tactical advantage of the SNAGMAG™ is to double the ammunition that your carrying with a small footprint and without loading more gear onto your belt. It uses a sturdy knife clip to keep it out of sight and easily accessible.

Regardless of how you choose to carry your firearm, the need for more ammunition doesn't change, the SNAGMAG™ is always there in your front pocket for a quick and easy reload.



Made in USA



AVAILABLE SKUS	MODELS
TAC-SNAG-101-L/R	1911 7 round / Kimber Ultra Aegis II
TAC-SNAG-102-L/R	1911 8 round/ Sig P220
TAC-SNAG-103-L/R	Bersa Thunder
TAC-SNAG-104-L/R	CZ 75 / Beretta 92 / Sig Sauer P226
TAC-SNAG-105-L/R	Glock 17, 22, 33
TAC-SNAG-106-L/R	Glock 19, 23, 32
TAC-SNAG-107-L/R	Glock 20, 21
TAC-SNAG-108-L/R	Glock 26, 27
TAC-SNAG-109-L/R	Glock 29, 30
TAC-SNAG-110-L/R	H&K P2000, USP Compact
TAC-SNAG-111-L/R	H&K P30, VP9
TAC-SNAG-112-L/R	Sig Sauer P227 45 ACP
TAC-SNAG-113-L/R	Kimber Solo 9mm
TAC-SNAG-114-L/R	Kel Tec PF9 / Ruger LC9 / BereZa Nano / Sig Sauer P938 Extended 7 round / Kimber Micro 9 Extended 7 round
TAC-SNAG-115-L/R	Walther PPQ, P99
TAC-SNAG-116-L/R	Beretta PX4 Storm
TAC-SNAG-117-L/R	Beretta PX4 Storm Compact
TAC-SNAG-118-L/R	Springfield EMP, XD's 9mm Extended 9 round
TAC-SNAG-119-L/R	Sig Sauer P232 / Kahr P380
TAC-SNAG-120-L/R	Sig Sauer P938 9/40, DB 9/40 / Kimber Micro 9mm - 6 round
TAC-SNAG-121-L/R	LCP / Sig Sauer P238 / Kel-Tec P3AT / Colt Mustang Pocketlite, DB380
TAC-SNAG-122-L/R	S&W M&P Full 9/40 / Sig Sauer P250, 320 17 Round
TAC-SNAG-123-L/R	S&W M&P Full 45 ACP
TAC-SNAG-124-L/R	Springfield XDm Compact, M&P Compact / Ruger SR 9/40 Compact / Sig Sauer P250 Compact / H&K P2000SK, P30SK

**NEW  
FOR  
2020**

TAC-SNAG-125-L/R	S&W M&P Shield 9mm/40
TAC-SNAG-126-L/R	Springfield XD Subcompact 9/40 / SCCY CPX, / CZ RAMI / Walther P99 Compact / Taurus PT111/140
TAC-SNAG-127-L/R	Springfield XDs 9mm 7 round
TAC-SNAG-128-L/R	Kahr CW9/40, PM 9/40 / Taurus 709 Slim
TAC-SNAG-129-L/R	Springfield XD/XDm Full 45 ACP
TAC-SNAG-130-L/R	Springfield XD 9/40 Full Size / FN FNH, FNP 9/40 / Ruger P89, 95 / Sig Sauer SP2022
TAC-SNAG-131-L/R	Springfield XDm Full 9/40 / FN FNH FNS, FNX / Ruger SR9/40 Full
TAC-SNAG-132-L/R	Springfield XDs 45 5 round
TAC-SNAG-133-L/R	Walther PPS 9mm 7round /40 6 round
TAC-SNAG-134-L/R	Walther PPK 380 7 round
TAC-SNAG-135-L/R	S&W Bodyguard
TAC-SNAG-136-L/R	Glock 36
TAC-SNAG-137-L/R	Glock 42
TAC-SNAG-138-L/R	Kahr CW 45 ACP 6 round
TAC-SNAG-139-L/R	Kahr CW 45 ACP 7 round
TAC-SNAG-140-L/R	S&W 5900 Series
TAC-SNAG-141-L/R	Sig Sauer P239 9mm 8 round
TAC-SNAG-142-L/R	Sig Sauer P229 40/357
TAC-SNAG-143-L/R	Glock 43 (fits flush mount & +1)
TAC-SNAG-144-L/R	Sig Sauer 250, 320 - 15 Round
TAC-SNAG-145-L/R	Springfield XDs 45 Extended 7 Round
TAC-SNAG-146-L/R	Springfield XDs 9mm Extended
TAC-SNAG-147-L/R	Springfield XD Compact 45 ACP - 10 Round
TAC-SNAG-148-L/R	Springfield XDm Compact 45 - 9 round
TAC-SNAG-149-L/R	H&K P2000 SK
TAC-SNAG-150-L/R	Walther CCP
TAC-SNAG-151-L/R	1911 45 ACP - 10 Round
TAC-SNAG-152-L/R	S&W Shield 45 ACP
TAC-SNAG-153-L/R	Sig Sauer P365 - 10 round
TAC-SNAG-154-L/R	Sig Sauer P365 - 12 round
TAC-SNAG-155-L/R	Glock 43 +2 Extension (Glockstore, Striker Fire, Taran Tactical +3)
TAC-SNAG-156-L/R	Glock 43 +4 Extension (Glockstore only)
TAC-SNAG-157-L/R	Glock 26/27/33 Extended
TAC-SNAG-158-L/R	Glock 48/43X - 10 round

# SNAGMAG™

CONCEALED MAGAZINE HOLSTER



# OPTIC READY

## Belt Holsters



**1791 Optic Ready belt holsters** are handcrafted multi-fit designs that accommodate a wide range of firearms with accompanying optics. Sizes listed also include similar frames.

From full-sized 1911's to modern, compact semi-auto's, these holsters are built to mold perfectly to your handgun while standing up to the rigors of everyday wear. Their optic cut, open bottom design to accommodate threaded barrels, and tall sweat guard ensure your optic is protected while providing a layer between you and your firearm.

Enjoy a lifetime of superior carry with reinforced stitching, ensuring quality and security. All backed by our lifetime warranty and 100% customer satisfaction guarantee.



**NEW  
FOR  
2020**



OR-BH1



OR-BH2.1

## OR-BH1

**1911:** 4", 5" up to Half Rail  
**Browning:** HP  
**Colt:** 1911 4" & 5"  
**Kimber:** 1911 5"  
**Rock Island:** 1911 4" & 5"  
**Sig Sauer:** 1911 4" & 5"  
**Springfield:** 1911 4" & 5"

## OR-BH2.1

**1911:** Officer with Rail  
**Glock:** 17, 19, 19x, 23, 25, 26, 27, 28, 29, 30, 32, 33, 45, 48  
**FN:** FNS-9  
**Ruger:** SR9, SR40, SR22  
**S&W:** MP9, MP40, MP40c, Shield, 5903  
**Sig Sauer:** P225-A1, P228, P229, P229c  
**Springfield:** XD9, XD40, XDS, XDE  
**Taurus:** PT111, G2, G2c, 709 Slim  
**Walther:** P99, P22, PPS, CCP

### AVAILABLE SKUS

OR-BH1-CBR-R  
OR-BH1-SBL-R  
OR-BH1-SBR-R

OR-BH2.1-CBR-R  
OR-BH2.1-SBL-R  
OR-BH2.1-SBR-R



**NEW  
FOR  
2020**

## OR-BH2.4

**Beretta:** 92, 92fs, M9

**CZ:** 75/75b, P09, P10f

**FN:** FN5.7, FNx, FNS 40 Longslide,  
9 Longslide

**H&K:** VP tactical, VP40, HK 45,  
P30L, Mark 23, USP Tactical

**Ruger:** 3810, 3811, American,  
Security-9

**Sig Sauer:** P220, P226, P227, P320,  
SP2022

**Springfield:** XD Mod.2 4", XDM  
3.8", XDM 4.5"

**Walther:** PPQ Q4 Tactical, PPQ 45



OR-BH2.4

## OR-BH2.4s

**CZ:** P01 Urban Grey, P10C, P10S

**FN:** FN509, FNS 40, FNS 40c, FNS 9,  
FNx 40, FNx 9

**H&K:** 45c Tactical, P2000, USPc,  
VP9sk, VP 40, VP9, VP Tactical, P30

**Sig Sauer:** M11-A1, P225 A-1, P229  
Legion, P229c, P320

**Springfield:** XDMc

**Walther:** Creed, PPQ M2, PPW 4", PPX



OR-BH2.4s

### AVAILABLE SKUS

OR-BH2.4-CBR-R

OR-BH2.4-SBL-R

OR-BH2.4-SBR-R

OR-BH2.4S-CBR-R

OR-BH2.4S-SBL-R

OR-BH2.4S-SBR-R



# PADDLE

## Paddle and Optic Ready Paddle Holsters

**NEW  
FOR  
2020**



**1791 Paddle holsters** include an adjustable cant for greater comfort and wearability. Our multi-fit paddle designs allow for a quick on and off while out and about. Sizes listed also include similar frames.

Optic Ready Paddle Holsters provide the same comfort and adaptability of the original paddle line but with a built in optic cut that allows the use of an optic. It also protects that optic with the built in sweat guard.



### Optic Ready Paddle



OR-PDH-C



OR-PDH-1

### Paddle



## PDH-C

**1911:** 3"

**Bersa:** Thunder 380

**Glock:** 42, 43, 43x

**Kahr:** CW45, K9

**Kimber:** Micro 380, Micro 9, Ultra Carry

**Ruger:** LC9, SR22, SR1911

**Sig Sauer:** P238, P365, Ultra Nitron

**Walther:** PPK

#### AVAILABLE SKUS

PDH-C-CBR-R

PDH-C-SBL-R

PDH-C-SBR-R

OR-PDH-C-CBR-R

OR-PDH-C-SBL-R

OR-PDH-C-SBR-R



## PDH-1

**1911:** 4", 5" up to Half Rail

**Browning:** HP

**Colt:** 1911 4" & 5"

**Kimber:** 1911 5"

**Rock Island:** 1911 4" & 5"

**Sig Sauer:** 1911 4" & 5"

**Springfield:** 1911 4" & 5"

#### AVAILABLE SKUS

PDH-1-CBR-R

PDH-1-SBL-R

PDH-1-SBR-R

OR-PDH-1-CBR-R

OR-PDH-1-SBL-R

OR-PDH-1-SBR-R

**NEW  
FOR  
2020**



OR-PDH-2.1



OR-PDH-2.4



OR-PDH-2.4s



## PDH-2.1

**1911:** Officer with Rail

**FN:** FNS-9

**Glock:** 17, 19, 19x, 23, 25, 26, 27, 28, 29, 30, 32, 33, 45, 48

**Ruger:** SR9, SR40, SR22

**S&W:** MP9, MP40, MP40c, Shield, 5903

**Sig Sauer:** P225-A1, P228, P229, P229c

**Springfield:** XD9, XD40, XDS, XDE

**Taurus:** PT111, G2, G2c, 709 Slim

**Walther:** P99, P22, PPS, CCP

### AVAILABLE SKUS

PDH-2.1-CBR-R

PDH-2.1-SBL-R

PDH-2.1-SBR-R

OR-PDH-2.1-CBR-R

OR-PDH-2.1-SBL-R

OR-PDH-2.1-SBR-R

## PDH-2.4

**Beretta:** 92, 92fs, M9

**CZ:** 75/75b, P09, P10f

**FN:** FN5.7, FNX, FNS 40

Longslide, 9 Longslide

**H&K:** VP tactical, VP40, HK 45, P30L, Mark 23, USP Tactical

**Ruger:** 3810, 3811, American, Security-9

**Sig Sauer:** P220, P226, P227, P320, SP2022

**Springfield:** XD Mod.2 4", XDM 3.8", XDM 4.5"

**Walther:** PPQ Q4 Tactical, PPQ 45

### AVAILABLE SKUS

PDH-2.4-CBR-R

PDH-2.4-SBL-R

PDH-2.4-SBR-R

OR-PDH-2.4-CBR-R

OR-PDH-2.4-SBL-R

OR-PDH-2.4-SBR-R

## PDH-2.4s

**CZ:** P01 Urban Grey, P10C, P10S

**FN:** FN509, FNS 40, FNS 40c, FNS 9, FNX 40, FNX 9

**H&K:** 45c Tactical, P2000, USPc, VP9sk, VP 40, VP9, VP Tactical, P30

**Sig Sauer:** M11-A1, P225 A-1, P229 Legion, P229c, P320c

**Springfield:** XDMc

**Walther:** Creed, PPQ M2, PPW 4", PPX

### AVAILABLE SKUS

PDH-2.4S-CBR-R

PDH-2.4S-SBL-R

PDH-2.4S-SBR-R

OR-PDH-2.4S-CBR-R

OR-PDH-2.4S-SBL-R

OR-PDH-2.4S-SBR-R

## PDH-R1

**Colt:** Cobra

**Revolvers:** J-Frame

**Rossi:** Small Frame Revolvers

**Ruger:** LCR

**S&W:** 38 Special, LCR, 638, 642, Bodyguard

**Taurus:** 85, 856

### AVAILABLE SKUS

PDH-R1-CBR-R

PDH-R1-SBL-R

PDH-R1-SBR-R

## PDH-R2

**Revolvers:** K and L Frame

**Ruger:** GP100

**S&W:** K Frame, 686

### AVAILABLE SKUS

PDH-R2-CBR-R

PDH-R2-SBL-R

PDH-R2-SBR-R



**NEW  
FOR  
2020**

## Kydex Paddle Holsters



**1791 Tactical OWB Kydex Paddle holsters** include excellent build quality and adjustable cant and retention. The added paddle allows for a quick on and off and provides an uncommon ease of use.



TAC-PDH  
P320



TAC-PDH  
P365

### TAC-PDH GLOCK

**Glock:** 26/27/33, 19/23/32, 17/22/31, 34/35, 19X, 45, Gen 3, Gen 4 and Gen 5 models

### TAC-PDH P365

**Sig Sauer:** P365

### TAC-PDH P320

**Sig Sauer:** M17,P320c,P320 Carry, P320 Fullsize, P320 RX Compact, P320 RX Fullsize, P320 Tacops, P320 X-Carry, P320 X-Five Fullsize, P320 X-VTAC,XM179mm/.40cal models only

### TAC-PDH CZP10

**CZ:** P10C, P10F, P10S 9mm/.40cal models

### TAC-PDH GLOCK43

**Glock:** 43, 43X

### TAC-PDH SHIELD

**S&W:** Shield - 9mm/.40cal 1.0 & 2.0 Models

### TAC-PDH XDS

**Springfield:** XDS - 9mm/.40-cal/.45acp - 3.3" & 4.0" Barrel Lengths, Mod 1 and Mod 2 Models

### TAC-PDH 1911

All Government Frame 1911's - All Barrel Lengths - All Calibers Will Not Fit 1911 w/ Picatinny Rail

### AVAILABLE SKUS

- TAC-PDH-OWB-Glock-BLK-R
- TAC-PDH-OWB-P365-BLK-R
- TAC-PDH-OWB-P320-BLK-R
- TAC-PDH-OWB-CZP10-BLK-R
- TAC-PDH-OWB-GLOCK43-BLK-R
- TAC-PDH-OWB-SHIELD-BLK-R
- TAC-PDH-OWB-XDS-BLK-R
- TAC-PDH-OWB-1911-BLK-R



## TAC-IWB GLOCK

**Glock:** 26/27/33, 19/23/32, 17/22/31, 34/35, 19X, 45, Gen 3, Gen 4 and Gen 5 models

## TAC-IWB P365

**Sig Sauer:** P365

## TAC-IWB P320

**Sig Sauer:** M17,P320c,P320 Carry, P320 Fullsize, P320 RX Compact, P320 RX Fullsize, P320 Tacops, P320 X-Carry, P320 X-Five Fullsize, P320 X-VTAC,XM179mm/.40cal models only

## TAC-IWB CZP10

**CZ:** P10C, P10F, P10S 9mm/.40cal models

## TAC-IWB GLOCK43

**Glock:** 43, 43X

## TAC-IWB SHIELD

**S&W:** Shield - 9mm/.40cal 1.0 & 2.0 Models

## TAC-IWB XDS

**Springfield:** XDS - 9mm/.40-cal/.45acp - 3.3" & 4.0" Barrel Lengths Mod 1 and Mod 2 Models

## TAC-IWB 1911

All Government Frame 1911's - All Barrel Lengths - All Calibers Will Not Fit 1911 w/ Picatinny Rail

## AVAILABLE SKUS

TAC-IWB-GLOCK-BLK-R

TAC-IWB-P365-BLK-R

TAC-IWB-P320-BLK-R

TAC-IWB-CZP10-BLK-R

TAC-IWB-GLOCK43-BLK-R

TAC-IWB-SHIELD-BLK-R

TAC-IWB-XDS-BLK-R

TAC-IWB-1911-BLK-R



TAC-IWB  
GLOCK



TAC-IWB  
1911

## IWB Kydex Holsters



**1791 Tactical IWB Kydex holsters** represent a comfortable and dependable solution for everyday concealed carry.

The lightweight, slim design combines multiple features not found in most holsters for a customized, multi-position fit.

In addition to being designed to fit threaded barrels, optics, and raised iron sights, they offer an adjustable cant, adjustable retention, and an integrated concealment wing that increases comfort and concealability.



## 2WH

**Slim, low-profile holster fits firearms with and without small lights and lasers**



The 2-Way Holster provides one special feature not found in your everyday leather holster offerings; it's adjustable to accommodate small lights and lasers that attach to the front of the trigger guard. The 2-Way Holster is made with certified, American Heavy Native Steerhide using a slim, low-profile holster design that reduces printing and is excellent for concealment. Sizes listed also include similar frames.

## 3WH

**Ambidextrous Multi-Fit Holster Built for Comfort**



When multiple holsters aren't an option the 1791 Gunleather 3-Way OWB Concealment Holster answers the call with three carry options for both right- and left-handed people totaling 6 versatile positions. The carry positions are vertical strong side, horizontal small-of-back or weak side cross-draw.

The design on this holster is low-profile for easy concealment and it can be easily modified to accommodate certain small lights and lasers. Sizes listed also include similar frames.



2WH-2



3WH-1

### SIZE 1

**Browning:** HP

**Colt:** 1911 3" & 4"

**Kimber:** 1911 3" & 4"

**Sig Sauer:** 1911 3" & 4"

### SIZE 2

**Glock:** 42, 43

**Keltec:** 380, P11

**Ruger:** LCP

**S&W:** Bodyguard

**Sig Sauer:** P365

### SIZE 3

**Browning:** 26, 25, 27, 29, 30, 33, 48

**Ruger:** LC9, SR9c, SR40, SR22

**Sig Sauer:** P225

**S&W:** MP9, Shield

**Walther:** PPS, CCP, P22

### AVAILABLE SKUS

2WH-1-SBL-R

2WH-1-SBL-L

2WH-2-SBL-R

2WH-2-SBL-L

2WH-3-SBL-R

2WH-3-SBL-L

2WH-4-SBL-R

2WH-4-SBL-L

2WH-5-SBL-R

2WH-5-SBL-L

3WH-1-SBL-A

3WH-1-CBR-A

3WH-1-SBR-A

3WH-1-VTG-A\*

3WH-2-SBL-A

3WH-2-CBR-A

3WH-2-SBR-A

3WH-2-VTG-A\*

3WH-3-SBL-A

3WH-3-CBR-A

3WH-3-SBR-A

3WH-3-VTG-A\*

3WH-4-SBL-A

3WH-4-CBR-A

3WH-4-SBR-A

3WH-4-VTG-A\*

3WH-5-SBL-A

3WH-5-CBR-A

3WH-5-SBR-A

3WH-5-VTG-A\*

## SIZE 4

**Glock:** 26, 27, 28, 29, 30, 33, 39

**Sig Sauer:** P228, P239

**Springfield:** XDS, XDE, XD (9 and 40 cal.)

**Taurus:** G2, G2c, 709 slim

**Walther:** PPS, CCP

## SIZE 5

**Beretta:** 92s, M9, Px4Storm

**CZ:** 75, P10, P07, P01

**Glock:** 17, 19, 20, 21, 31, 32, 38, 45

**H&K:** 40c, P2000, VP9, VP40

**Ruger:** P95, American, SR9, SR40

**S&W:** MP9, MP40, MP45

**Sig Sauer:** P226, P229, P320c, P220

**Springfield:** XD9, XD40, XDM

**Styer:** M9-A1

**Taurus:** PT24/7, PT111

**Walther:** P99, PPG

## AVAILABLE SKUS

4WH-1-SBL-R

4WH-1-SBL-L

4WH-1-CBR-R

4WH-1-VTG-R\*

4WH-1-SBR-R

4WH-1-CVTG-R\*

4WH-2-SBL-R

4WH-2-SBL-L

4WH-2-CBR-R

4WH-2-VTG-R\*

4WH-2-SBR-R

4WH-3-SBL-R

4WH-3-SBL-L

4WH-3-CBR-R

4WH-3-VTG-R\*

4WH-3-SBR-R

4WH-4-SBL-R

4WH-4-SBL-L

4WH-4-CBR-R

4WH-4-VTG-R\*

4WH-4-SBR-R

4WH-5-SBL-R

4WH-5-SBL-L

4WH-5-CBR-R

4WH-5-VTG-R\*

4WH-5-SBR-R



4WH-3



4WH-3

## 4WH

### Ideal Balance of Protection and Comfort Delivers Four Distinct IWB/OWB Carry Positions



The best-selling 4-Way Concealment & Belt Leather Holster features multi-fit engineering that allows for a wide variety of firearms in ONE holster. Sizes listed also include similar frames.

With this multi-position holster, simple adjustments allow for your particular carry needs throughout the day. This is a low-profile holster, which allows you to conceal with convenience in vertical, horizontal, cross-draw, or IWB carry. In addition, this holster is designed to allow the user to modify it to fit certain small lights and laser attachments.



# BH

## Open Top Leather Belt Holster



The 1791 Gunleather assortment of **Open Top Belt Holsters** caters to a variety of popular and classic sidearms.

From full-sized 1911's with or without rails, to modern, compact semi-auto's, these holsters are built to mold perfectly to your handgun while standing up to the rigors of everyday wear. Sizes listed also include similar frames.

Available in assorted colors, choose the Open Top Belt Holster that best matches your gun and attire.

Project Stealth OWB holsters combine sophisticated, patented, flexible, woven carbon fiber and premium American Heavy Native Steerhide for a contemporary, stylish holster that's both durable and flexible.



CF-BHC



CF-BH1



### BHC

**Bersa:** Thunder 380

**Colt:** 1911 3"

**Glock:** 42, 43

**Kimber:** Micro 9, Ultra Carry

**Ruger:** LC9, SR22

**Sig Sauer:** P365

**Walther:** PPK

#### AVAILABLE SKUS

BHC-SBL-R  
BHC-SBL-L  
BHC-SBR-R  
BHC-CBR-R  
CF-BHC-SBL-R

### BH1

**1911:** Fits 4" and 5" with up to Half Rail (Fits calibers .40, .45, 10mm, and 9mm)

**Browning:** HP

#### AVAILABLE SKUS

BH1-SBL-R  
BH1-SBL-L  
BH1-SBR-R  
BH1-CBR-R  
BH1-BLB-R  
BH1-BLK-R  
BH1-VTG-R\*  
CF-BH1-SBL-R





CF-BH2.1



CF-BH2.3



CF-BH2.4

# CF BH Project Stealth Carbon Fiber Open Top Belt Holster



## BH2.1

**FN:** FNS-9  
**Glock:** 17, 19, 23, 25, 27, 28, 29, 30, 32, 33  
**Ruger:** SR9, SR40, SR22  
**S&W:** MP9, MP40, MP40c, Shield, 5903  
**Sig Sauer:** P225  
**Springfield:** XD9, XD40, XDS, XDE  
**Taurus:** PT111, G2, G2c, 709 Slim  
**Walther:** P99, P22, PPS, CCP

### AVAILABLE SKUS

BH2.1-SBL-R  
BH2.1-SBL-L  
BH2.1-SBR-R  
BH2.1-CBR-R  
BH2.1-BLB-R  
BH2.1-VTG-R\*  
CF-BH2.1-SBL-R



## BH2.3

**Beretta:** 92FS  
**CZ:** 75, P01, P07, P10  
**Glock:** 17, 20, 21, 40, 41  
**H&K:** P2000  
**Rock Island:** 1911 5" w/rail  
**Ruger:** P95, American  
**Sig Sauer:** P220, P226, 1911 5" w/rail  
**Springfield:** 1911 5" w/rail  
**Styer:** M9-A1  
**Walther:** P99, PPQ

### AVAILABLE SKUS

BH2.3-SBL-R  
BH2.3-SBL-L  
BH2.3-SBR-R  
BH2.3-CBR-R  
BH2.3-VTG-R\*  
BH2.3-CVTG-R\*  
CF-BH2.3-SBL-R



## BH2.4

**Beretta:** M9, 92  
**CZ:** 75  
**FN:** FN5.7, FNX, FNS 40 Longslide, 9 Longslide  
**H&K:** VP tactical, VP40, HK 45, P30L, Mark 23, USP Tactical  
**Ruger:** 3810, 3811, American, Security-9  
**Sig Sauer:** P220, P227, P226, P320, SP2022  
**Springfield:** XD Mod. 2 4"  
**Walther:** PPQ Q4 Tactical, PPQ 45

### AVAILABLE SKUS

BH2.4-SBL-R  
BH2.4-SBL-L  
BH2.4-CBR-R  
BH2.4-BLK-R  
CF-BH2.4-SBL-R



## BH2.4s

**FN:** FN509, FNS 40, FNS 40c, FNS 9, FNX 40, FNX 9  
**H&K:** 45c Tactical, P2000, USPc, VP9sk, VP 40, VP9, VP Tactical, P30  
**Sig Sauer:** M11-A1, P229, P229c, P320c  
**Springfield:** XDMc, XDM 3.8", XDM 4.5"  
**Taurus:** TX 22  
**Walther:** PPQ M2, PPX

### AVAILABLE SKUS

BH2.4S-SBL-R  
BH2.4S-CBR-R

# SCH

## Smooth Concealment Holster



The **Smooth Concealment Holster (SCH)** is the most comfortable soft cowhide holster available. Delivering total concealment, it only gets better with age; the more it is worn the more comfortable it becomes as it forms perfectly to you and your firearm.

The SCH delivers a carry experience like no other. Regardless of your firearm preference, the available sizes accommodate an enormous selection of popular handguns perfectly. Sizes listed also include similar frames.



SCH-4



SCH-2

### AVAILABLE SKUS

SCH-0-NSB-R  
SCH-0-NSB-L

SCH-1-NSB-R  
SCH-1-NSB-L

SCH-2-NSB-R  
SCH-2-NSB-L

SCH-3-NSB-R  
SCH-3-NSB-L

SCH-4-NSB-R  
SCH-4-NSB-L

SCH-5-NSB-R  
SCH-5-NSB-L

SCH-6-NSB-R  
SCH-6-NSB-L

### SCH size 0

**Beretta:** Tomcat 32, Pico 380  
**Colt:** 903 Pocket, Mustang Lite  
**Kahr:** CW380  
**Kimber:** Micro 380, Micro 9  
**S&W:** Bodyguard  
**Sig Sauer:** P238, P938

### SCH size 1

**Bersa:** Thunder 380  
**Keltec:** 380  
**Ruger:** LCP  
**Sig Sauer:** P938  
**S&W:** Bodyguard  
**Walther:** PPK

### SCH size 2

**Charter Arms:** Small Frame Revolvers  
**Rossi:** Small Frame Revolvers  
**Ruger:** LCR  
**S&W:** 38 Special, J-Frame  
**Taurus:** Small Frame Revolvers

### SCH size 3

**1911:** 3 inch models  
**Bersa:** Thunder 380  
**Glock:** 43, 43X, 42  
**Ruger:** LC9, SR22  
**Sig Sauer:** P365  
**Walther:** P22

### SCH size 4

**CZ:** 75  
**Glock:** 17, 19, 22, 23, 25, 26, 27, 29, 30, 31, 32, 33  
**Ruger:** SR9, SR9c, SR40  
**S&W:** MP40, MP9, Shield  
**Sig Sauer:** P228, P229, P239, P225  
**Springfield:** XD9, XD40, XDS, XDE  
**Taurus:** G2, PT111, PT24/7, 709 Slim

## SCH size 5

**H&K:** 45c, P2000USPc, VP9sk  
**Sig Sauer:** M11A1, P229c, P320c  
**Springfield:** XDMc

## SCH size 6

**1911:** 3 and 4 inch models  
**Browning:** HP  
**Sig Sauer:** 1911 5" w/o Rail

## RCH size 3

**1911:** 3 inch models  
**Bersa:** Thunder 380  
**Glock:** 43, 43X, 42  
**Ruger:** LC9, SR22  
**Sig Sauer:** P365  
**Walther:** P22

## RCH size 4

**Glock:** 17, 19, 22, 23, 25, 26, 27, 29, 30, 31, 32, 33  
**Ruger:** SR9, SR9c, SR40  
**S&W:** MP40, MP9, Shield  
**Sig Sauer:** P225  
**Springfield:** XD9, XD40

## RCH size 5

**CZ:** 75  
**Sig Sauer:** P228, P229, P239  
**Springfield:** XDS, XDE  
**Taurus:** G2, P111, PT24/7, 709 slim



RCH-5



RCH-5

### AVAILABLE SKUS

RCH-3-BLB-R  
RCH-3-BLK-R  
RCH-4-BLB-R  
RCH-4-BLK-R  
RCH-5-BLB-R  
RCH-5-BLK-R

## RCH

### Rigid Concealment Holster



The 1791 Gunleather Rigid Concealment Holster (RCH) provides a sturdy IWB option that allows for one-handed reholstering. Three simple sizes fit a large range of compact to full-sized handguns. Sizes listed also include similar frames. Handcrafted with a finished leather interior that provides snug retention.

The exterior is formed of both a finished leather top to prevent chafing and a soft belly leather bottom to provide comfort and breathability.

# BHX

## Reinforced Thumb Break Offers More Security



While our open top leather holsters offer excellent retention that can withstand the most rigorous of activities, there will always be those who want more. To satisfy them, 1791 Gunleather offers a **Thumb Break Holster (BHX)** with two distinct cant positions.

The FBI-cant allows for a fast and smooth draw of your firearm, and the back-cant position is intended for faster handgun acquisition, which is especially useful when sitting, driving cars and ATVs, or horseback riding.

Contoured to fit multiple firearm configurations, the Thumb Break Holster features added barrel room for higher front sights. This model is also available in a variety of colors. Sizes listed also include similar frames.



BHX1



BHX4

## BHX1

**1911:** 4 and 5 inch models with half rails  
**Browning:** HP

## BHX3

**FN:** FNS-9  
**Glock:** 17, 19, 23, 25, 27, 28, 29, 30, 32, 33  
**Ruger:** SR9, SR40, SR22  
**S&W:** MP9, MP40, MP40c, Shield, 5903  
**Sig Sauer:** P225  
**Springfield:** XD9, XD40, XDS, XDE  
**Taurus:** PT111, G2, G2c, 709 Slim  
**Walther:** P99, P22, PPS, CCP

## BHX4

**1911:** 4 and 5 inch versions with full rails (non-cocked and locked)  
**Beretta:** 92FS  
**CZ:** 75, P01, P07, P10  
**H&K:** VP9, VP40, P2000  
**Ruger:** P95, American  
**Styer:** M9-A1  
**Walther:** P99, PPQ

### AVAILABLE SKUS

BHX-1-CL-SBL-R	BHX-4-SBL-R
BHX-1-CL-SBL-L	BHX-4-SBL-L
BHX-1-CL-SBR-R	BHX-4-SBR-R
BHX-1-CL-CBR-R	BHX-4-CBR-R
BHX-1-CL-SBR-R	

BHX-3-SBL-R  
BHX-3-SBL-L  
BHX-3-SBR-R  
BHX-3-CBR-R

## BHX5

**Ruger:** 3810, 3811, American, Security-9  
**Sig Sauer:** P220, P227, P226, P320, SP2022

## BHX5s

**Beretta:** Cougar 8000F  
**Sig Sauer:** M11-A1, P229c, P250, P320 Carry, P320 X-Carry, P320c,  
**Springfield:** XD(M)c

### AVAILABLE SKUS

BHX-5-SBL-R	BHX-5S-SBL-R
BHX-5-SBL-L	BHX-5S-SBL-L
BHX-5-CBR-R	BHX-5S-CBR-R

## BHT3/4

**Glock:** 17, 19, 23, 25, 27, 28, 29, 30, 32, 33  
**Ruger:** SR9, SR40, SR22  
**S&W:** MP9, MP40, MP40c, Shield, 5903  
**Sig Sauer:** P225  
**Springfield:** XD9, XD40, XDS, XDE  
**Walther:** P99, P22, PPS, CCP  
**Taurus:** PT111, G2, G2c, 709 Slim

### AVAILABLE SKUS

BHT-3-SBL-R	BHT-4-SBL-R
BHT-3-SBL-L	BHT-4-SBL-L
BHT-3-SBR-R	BHT-4-SBR-R
BHT-3-CBR-R	BHT-4-CBR-R



BHT3



BHT4

## BHT

### Thumb Break OWB/IWB Belt Holsters Delivers Enhanced Retention and Security



The BHT3 delivers all three OWB positions including vertical draw, horizontal small-of-back and cross-draw. The BHT4 allows for four dynamic carry options including IWB using a metal clip and OWB vertical draw, horizontal small-of-back, and cross-draw.



# RVH

## Revolver Belt Holsters



The 1791 Gunleather **J-Frame, K-Frame, & Z-Frame Revolver Belt Holsters** deliver a comfortable design that securely supports a wide selection of revolvers.

While these holsters are designed to fit a specific frame size, they still provide the multi-fit capability for which 1791 Gunleather holsters are known. For example, the J-Frame can also fit the Ruger LCR, the K-Frame revolvers can fit some L- and N-Frames, and the Z-Frame is not only capable of fitting S&W's Governor, but also Taurus' Polymer Public Defender. Sizes listed also include similar frames.

The holsters are designed to provide excellent retention, with the leather molding tightly around the cylinder.



RVH1



RVH3

## RVH1

**Charter Arms:** Small Frame Revolvers  
**Rossi:** Small Frame Revolvers  
**Ruger:** LCR  
**S&W:** 38 Special, J-Frame  
**Taurus:** Small Frame Revolvers

## RVH2

**Ruger:** GP100  
**S&W:** K Frame, 686

## RVH2s

**S&W:** K Frame 3" barrel

## RVH3

**S&W:** Governor  
**Taurus:** Judge & Public Defender (Polymer)

### AVAILABLE SKUS

RVH-1-SBL-R	RVH-2S-SBL-R
RVH-1-SBL-L	RVH-2S-SBL-L
RVH-1-SBR-R	RVH-2S-SBR-R
RVH-1-CBR-R	RVH-2S-CBR-R
RVH-1-VTG-R*	RVH-2S-CVTG-R*
RVH-2-SBL-R	RVH-3-SBL-R
RVH-2-SBL-L	RVH-3-SBR-R
RVH-2-SBR-R	RVH-3-CBR-R
RVH-2-CBR-R	

## BH1M1

**Browning:** HP

**Colt:** 1911 5"

**Kimber:** 1911 5"

**Rock Island:** 1911 5"

**Sig Sauer:** 1911 5"

**Springfield:** 1911 5"

**Magazines:** Metal Single Stack

## BH2.1M1.2

**Glock:** 17, 19, 23, 25, 27, 28, 29, 30, 32, 33

**Ruger:** SR9, SR40, SR22

**S&W:** MP9, MP40, MP40c, 5903

**Springfield:** XD9, XD40

**Taurus:** PT111, G2, G2

**Walther:** P99, P22

**Magazines:** Polymer Double Stack

### AVAILABLE SKUS

BH1M1-SBL-R

BH1M1-SBL-L

BH1M1-SBR-R

BH1M1-CBR-R

BH1M1-BLB-R

BH2.1M1.2-SBL-R

BH2.1M1.2-SBL-L

BH2.1M1.2-SBR-R

BH2.1M1.2-CBR-R

BH2.1M1.2-BLB-R



## BH1M1 - BH2.1M1.2

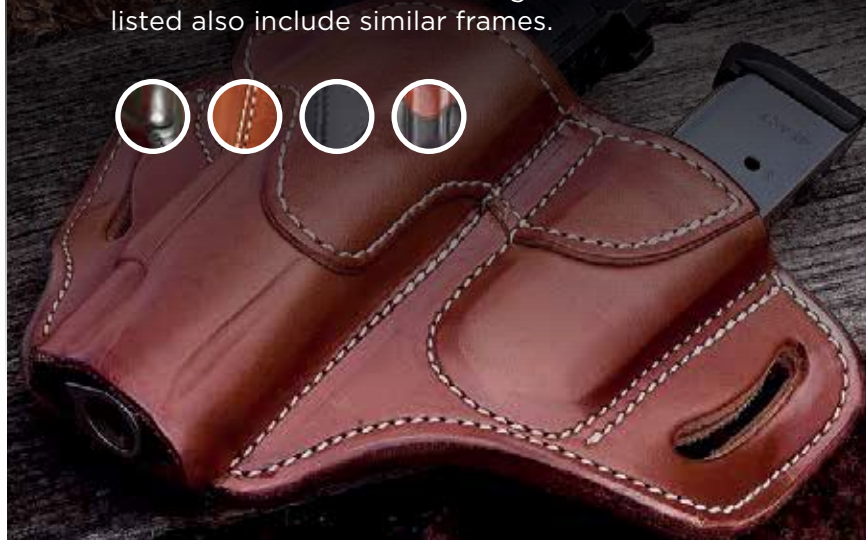
### Combo, Open Top Multi-Fit Belt Holster and Built-In Mag Pouch



The 1791 Gunleather **Combo, Open Top Multi-Fit Belt Holster and Built-In Mag Pouch** is perfect for use on duty, on the range, or in the field. The extra carrying capacity and comfortable leather deliver peace of mind and all-day comfort.

This pancake-style holster holds your gun and ammo firmly, using natural pressure between double-stitched steerhide. The open top design and curved, wide-spaced belt loops are optimized for a 1.5" belt to allow a closer ride and more comfortable carry.

The Combo Holster is available in two sizes, one fits your 1911s, and the other your mid-size, double stack firearms and magazines. Sizes listed also include similar frames.



## UIW

### Built For a Large Variety of Handguns With or Without Rails and Attachments



The **Universal IWB/OWB Holsters** are the most versatile and multi-fit 1791 Gunleather holsters.

The UIW fits subcompact to full-size handguns, some of which can be equipped with lights and rails. The UIW-X is designed for larger and more robust frames and firearm accessories. Sizes listed also include similar frames.



## UIW

- Subcompact to large frame handguns
- Handguns with rails
- Firearms equipped with lights and/or lasers

### AVAILABLE SKUS

UIW-SBL-A  
UIW-CBR-A

## UIW-X

- Most large frame handguns
- Handguns with rails
- Firearms equipped with lights and/or lasers

### AVAILABLE SKUS

UIW-X-SBL-A  
UIW-X-CBR-A



## MAG-1.1

One single stack magazine

### AVAILABLE SKUS

MAG-1.1-SBL-A      MAG-1.1-BLB-A  
MAG-1.1-SBR-A      MAG-1.1-VTG-A\*  
MAG-1.1-CBR-A

## MAG-1.2

One double stack (polymer) magazine

### AVAILABLE SKUS

MAG-1.2-SBL-A      MAG-1.2-CBR-A  
MAG-1.2-SBR-A      MAG-1.2-BLB-A

## MAG-2.1

Two single stack magazines

### AVAILABLE SKUS

MAG-2.1-SBL-A      MAG-2.1-BLB-A  
MAG-2.1-SBR-A      MAG-2.1-BLK-A  
MAG-2.1-CBR-A      MAG-2.1-VTG-A\*

## MAG-2.2

Two double stack (polymer) magazines

### AVAILABLE SKUS

MAG-2.2-SBL-A      MAG-2.2-BLB-A  
MAG-2.2-SBR-A      MAG-2.2-VTG-A\*  
MAG-2.2-CBR-A

## MAG-F

For metal and polymer double stack magazines

### AVAILABLE SKUS

MAG-F-2.2-SBL-A  
MAG-F-2.2-SBR-A  
MAG-F-2.2-CBR-A



## MAG

### Single and Dual Magazine Carriers for Single and Double Stack Magazines



1791 Gunleather knows the importance of spare magazines, and our Magazine Carriers are designed to cover a variety of carry preferences.

There is a choice of single or dual carriers, which fit single or double stack magazines. Our carriers require no additional retention devices, and the open top design allows quick access to your spare magazines.

The natural friction between two pieces of finely stitched leather, along with the custom wet molding process, ensures secure retention.



\*Vintage finishes (CVTG & VGT) have limited availability

## SLG

### Heavy Duty Universal Leather Rifle Slings Easy Change Between Rifles



1791 Gunleather **Heavy Duty Universal Rifle Slings** add comfort and ease of use in the field with your long gun. We purposefully designed our sling with a wider width at the shoulder area for better distribution of weight making it extra comfortable to carry.

1791 Gunleather uses only 100% Certified American Heavy Native Steerhide in sling construction. The leather is comfortable, it conforms perfectly to your body, and is a strong natural material that won't degrade over time.

Fits most semi-automatic, single shot, pump action, bolt action, and lever action rifles equipped with standard 1" swivels.

For added luxury and slip-resistant functionality, choose the SLG-1P "Premium" version.



#### SLG-1P

**Width:** 2.5" max at widest to 1" min at narrowest

**Length:** 36" adjusted max to 31" adjusted min

Swivel not included

Premium version has suede slip-resistant backing

#### SLG

**Width:** 2.5" max at widest to 1" min at narrowest

**Length:** 36" adjusted max to 31" adjusted min

Swivel not included

#### AVAILABLE SKUS

SLG-1P-SBL-A

SLG-1P-CBR-A

SLG-SBL-A

SLG-CBR-A



## BLT-01

# Heavy Duty Premium Steerhide Gun Belts Designed for Everyday Carry

**1791 Gunleather Gun Belts 01** are constructed with full-grain, 14-oz. leather found only on the top and most durable layer of heavy native steerhide. Our premium American heavy native steerhide is not sanded beyond tanning or dyeing, and the detailed process delivers a superior leather that's perfect for rugged working belts.

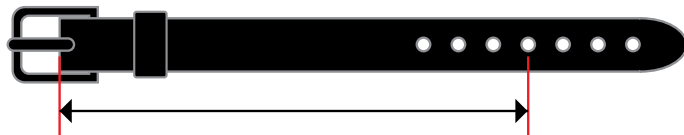
Designed to meet the highest expectations at an affordable price point, these belts are designed specifically for everyday carry.

Heavy-duty 1791 Gunleather Gun Belts 01 are made to hold all your gear.

Anything you want to carry on your waist from IWB holsters, OWB holsters, flashlights, mag pouches, knives, hammers, tape measures, and multi-tools are options. These belts are discreet and comfortable for concealed carry, and they're built to last.

### HOW TO DETERMINE THE CORRECT 1791 GUNLEATHER BELT SIZE

1. If you know your waist size, simply add 4 inches to determine your 1791 Gunleather Gun Belt size.
2. For example, if your waist is 36 inches, add 4 inches for a total 40 inches to equal your 1791 Gunleather Gun Belt size. This allows you to carry up to 2 accessories on your 1791 Gunleather Gun Belt, i.e. a holster and a mag carrier.
3. The following diagram shows how 1791 Gunleather Gun Belts are measured from the start of the leather/buckle to the middle hole tip.



ALL 1791 GUNLEATHER HOLSTERS FIT 1.5" BELTS

STEALTH BLACK	CLASSIC BROWN	WAIST SIZE	GUN BELT SIZE
BLT-01-32/36-SBL-A	BLT-01-32/36-CBR-A	32	36
BLT-01-34/38-SBL-A	BLT-01-34/38-CBR-A	34	38
BLT-01-36/40-SBL-A	BLT-01-36/40-CBR-A	36	40
BLT-01-38/42-SBL-A	BLT-01-38/42-CBR-A	38	42
BLT-01-40/44-SBL-A	BLT-01-40/44-CBR-A	40	44
BLT-01-42/46-SBL-A	BLT-01-42/46-CBR-A	42	46
BLT-01-44/48-SBL-A	BLT-01-44/48-CBR-A	44	48
BLT-01-46/50-SBL-A	BLT-01-46/50-CBR-A	46	50
BLT-01-48/52-SBL-A	BLT-01-48/52-CBR-A	48	52





HANDCRAFTED ONE AT A TIME

Need Assistance?  
Call customer service at  
**1 (800) 407-1791**  
or E-mail us at  
**[contact@1791gunleather.com](mailto:contact@1791gunleather.com)**

1835 NW 21st Terrace  
Miami, Florida 33142 U.S.A.

Follow us

